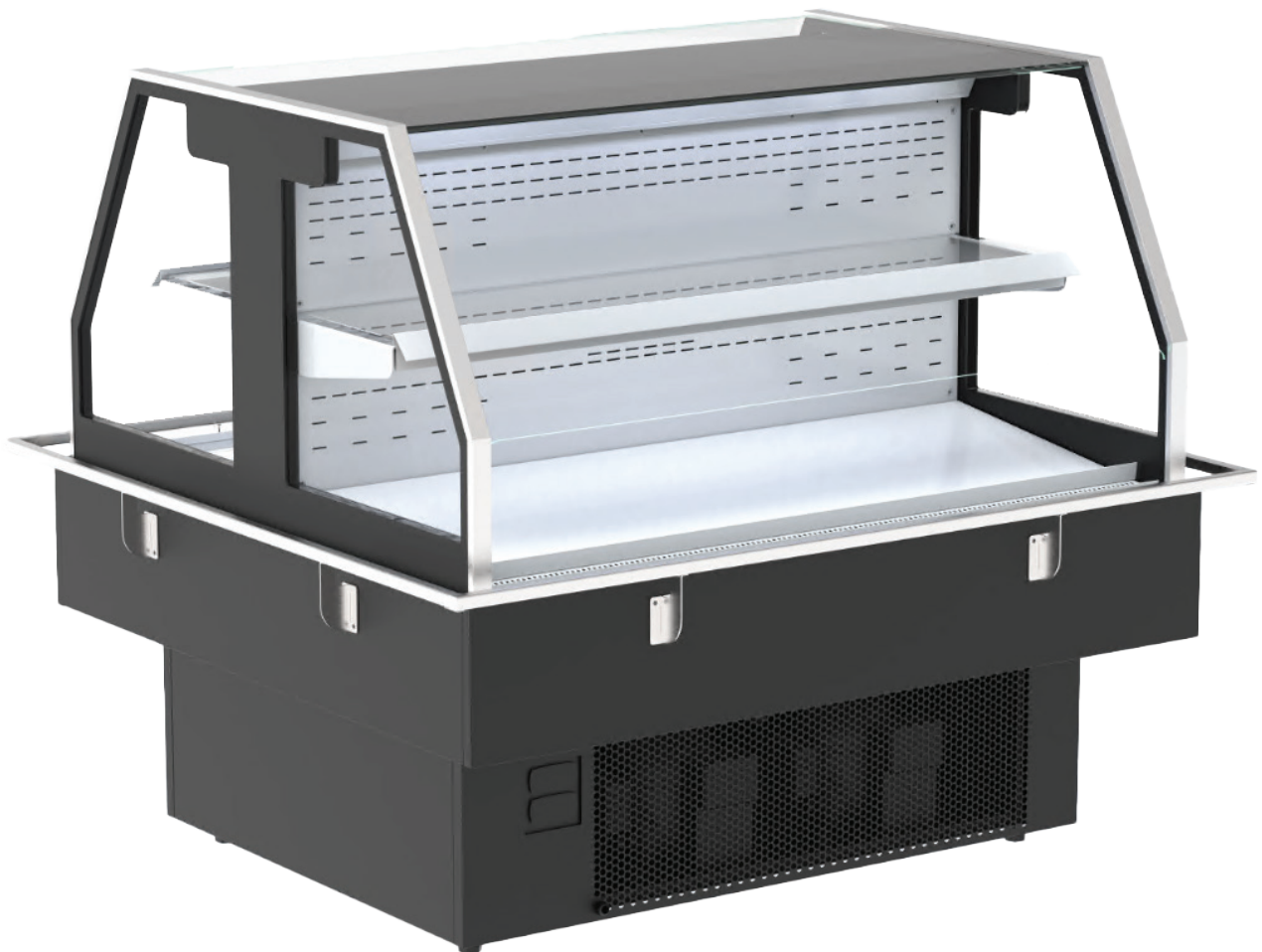


SELF-CONTAINED

# JM12-2

SELF CONTAINED ISLAND MERCHANDISER



ENHANCED ENERGY EFFICIENCY  
& VERSATILITY

**HUSSmann**<sup>®</sup>

NOTE: Shown with timber panels as optional feature



**PRODUCT BENEFITS**

- Ergonomic design for easy access
- Optimised display with LED lighting
- Longer merchandise shelf life
- Product temperature compliance
- Simple to install and maintain
- Suitable for Drinks, Specialty, Bakery and Grab and Go Merchandising

**STANDARD FEATURES**

- Internal panels - polished stainless steel
- External panels - powder coated steel
- Single row canopy light - 4000K
- Single row shelf light - 4000K
- Single row glass shelf - 270mm
- Angled base deck - 440mm
- Internal base liner - Stainless Steel
- Ticket strips
- EC fans
- Digital controller fitted

**CUSTOMISATIONS**

**ENDS**

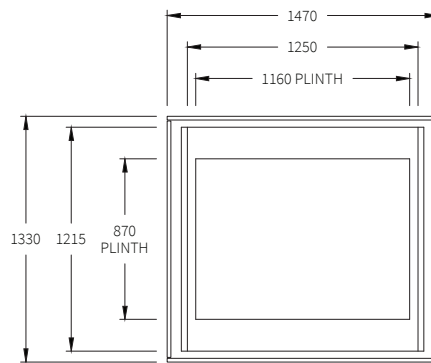
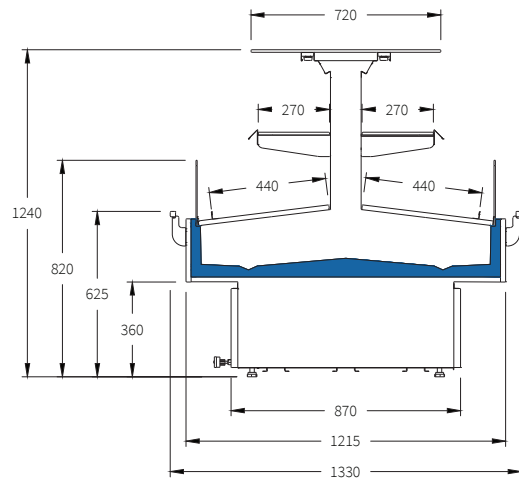
- Included

**BUMPER**

- Stainless steel bumper
- Timber cladding (option shown on front page)

**OTHER**

- Technology solutions
- Electronic shelf labels



| TECHNICAL DATA                           |               |
|--|---------------|
| Model (JM12-2)                           | JM12-2        |
| Depth (mm)                               | 1330          |
| Width (mm)                               | 1470          |
| Height (mm)                              | 1240          |
| Refrigerant Type                         | R290          |
| Refrigerant Charge                       | 2 x 150-grams |
| Total Display Area TDA (m <sup>2</sup> ) | 1.94          |

**AVAILABLE COLOURS**



**TEMPERATURE CLASS**

**3M2**

(-1°C to +7°C)

**Additional Information**

All Dimensions shown in Millimetres (mm) unless otherwise stated. Dimensions and features are subject to change. Please obtain current technical information prior to order confirmation.

**NOTE:** We reserve the right to change or revise specifications and product design in connection with any feature of our products. Such changes do not entitle the buyer to corresponding changes, improvements, additions or replacements for equipment previously sold or Shipped.



Australia Head Office  
 66 Glendenning Road Glendenning, NSW 2761 Australia  
 ph. +612 8805 0400  
 w. hussmann.com.au

**HUSSMANN®**