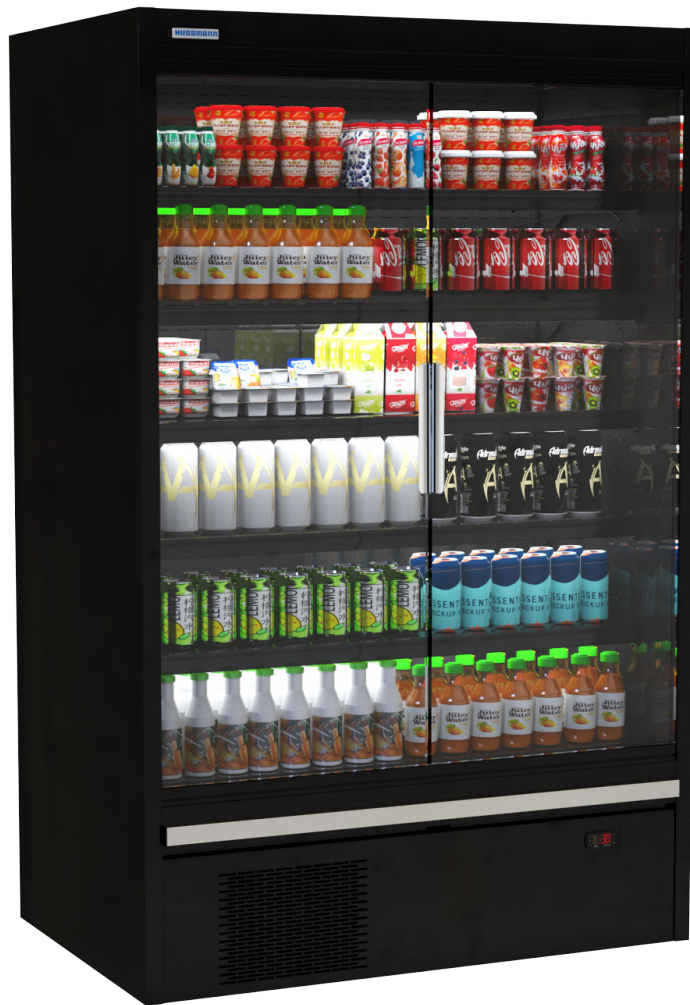


SELF-CONTAINED

H2TMDS

MULTIDECK DOOR - CHILLER CABINET



ENHANCED ENERGY EFFICIENCY
& VERSATILITY

HUSSmann[®]



PRODUCT BENEFITS

- Ergonomic design for easy product access
- Adjustable shelving options to optimise merchandising
- Optimised display with LED lighting
- Product temperature compliance
- Easy plug-in on-site installation

STANDARD FEATURES

- Eco-friendly and durable internal and external powder coat finish
- Single row of 4000K LED canopy lighting
- 5 rows of 450mm powder coated unlit shelves plus 525mm base
- Ticket strips
- Air return grill
- Long life galvanized internal base
- Rubber bumper
- Adjustable feet
- Automatic condensate removal
- EC fan motors
- Digital controller with temperature display

CUSTOMISATIONS

SHELVING & BASE SHELF

- Optional additional shelves and brackets
- Stainless steel reinforced solid shelving and base tray
- Roller shelving (optional product divider)
- Hang sell bar and hooks
- Wire or acrylic shelf fences (45mm, 75mm)

LIGHTING

- LED under-shelf lighting

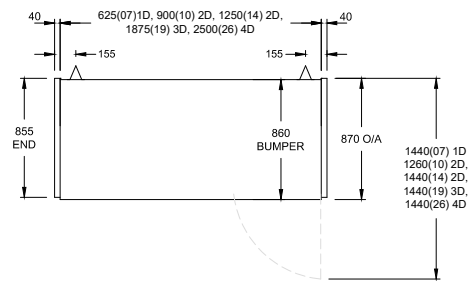
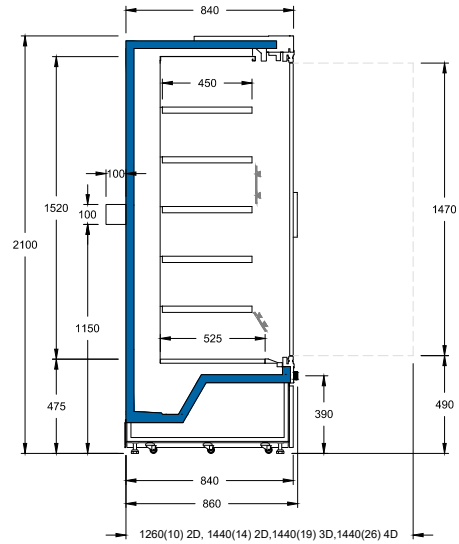
ENDS

- Solid mirror ends
- Glass view ends

OTHER

TECHNOLOGY SOLUTIONS

- Electronic shelf labels or video rail
- 35mm Castors (Not Lockable)



TECHNICAL DATA					
Model (H2TMDS)	H2TMDS-07	H2TMDS-10	H2TMDS-14	H2TMDS-19	H2TMDS-26
Number of Doors	1	2	2	3	4
Depth (mm)	860				
Height (mm)	2100				
Length w/o ends (mm)	625	900	1250	1875	2500
Length with ends (mm)	705	980	1330	1955	2580
Net Volume (L)	367	529	735	1102	1469
Gross Volume (L)	615	885	1229	1844	2459
Display Area (m ²)	0.960	1.381	1.918	2.876	3.835
Amperes (amps)	10	10	10	10	10

AVAILABLE COLOURS



TEMPERATURE CLASS

3M1

(+1 °C to +5 °C)

Additional Information

All Dimensions shown in Millimetres (mm) unless otherwise stated. Dimensions and features are subject to change. Please obtain current technical information prior to order confirmation.

NOTE: We reserve the right to change or revise specifications and product design in connection with any feature of our products. Such changes do not entitle the buyer to corresponding changes, improvements, additions or replacements for equipment previously sold or Shipped.



Australia Head Office
 66 Glendenning Road Glendenning, NSW 2761 Australia
 ph. +612 8805 0400
 w. hussmann.com.au

