

PRODUCE

PMN20F3U

MULTIDECK OPEN



ENHANCED ENERGY EFFICIENCY
& VERSATILITY

HUSSmann[®]

PRODUCT BENEFITS

- Ergonomic design for easy access
- Shelf depth variety to optimise merchandising
- Optimised display with LED lighting
- Low Total Energy Consumption (TEC)
- Longer merchandising shelf life
- Product temperature compliance
- Simple to install and maintain
- Air-Guide technology
- Seamless alignment to other P-Series models (All Cases)

STANDARD FEATURES

- Internal and external powder coating
- Single row of 4000K LED Canopy Lighting
- 5 Rows of 5000K Under-shelf LED lighting
- 5 Rows of 500 powder coated shelves
- Wire product fences 75mm
- Adjustable base wire tray with 115mm front
- Mirror kit
- Ticket strips
- Perforated air return grill
- Stainless steel base liner
- Double row Stainless steel square bumper
- Night Blind - Manual slow release
- Evaporator assembly fitted with valve
- Coils copper tube
- EC Fan motors
- Digital thermometer display fitted
- Alarm draw wire

CUSTOMISATIONS

SHELVING & BASE SHELF

- Optional additional shelves and brackets
- Product dividers
- Bag roll holder
- Stainless steel reinforced solid shelving and base tray
- Adjustable base wire tray with 75mm fence
- Hang sell and bar
- Wire or acrylic fences (45mm and 75mm)

LIGHTING

- Premium lighting available

ENDS

- Solid mirror ends
- Glass view ends
- Common ends
- Acrylic full height divider

BUMPER

- Rectangular options

OTHER

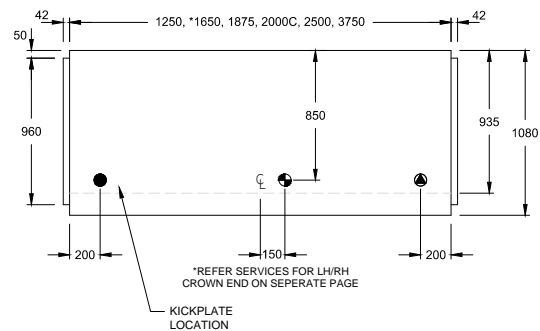
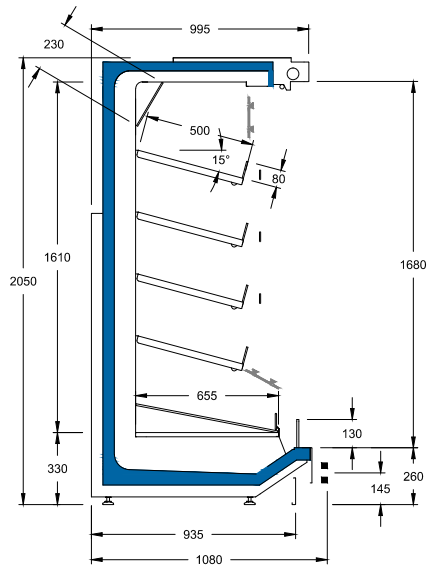
- Rear dress panels
- Valance panels - top or lower rear
- Rear vent fan kit
- Top mount piping

TECHNOLOGY SOLUTIONS

- Electronic expansion valve
- Electronic shelf labels or video rails
- CaseConnect™

ENERGY AND SUSTAINABILITY

- Motorised night blind
- Door solutions



AVAILABLE LENGTHS

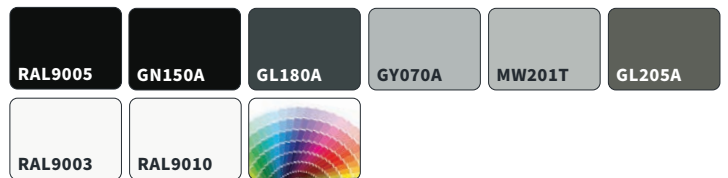
Excluding Ends: 1250, 1875, 2500, 3750
Crown Ends: 1650, 2000

AVAILABLE DEPTHS

Standard: 1080mm

TEMPERATURE CLASS
3M0
(-1 °C to +4 °C)

AVAILABLE COLOURS



Additional Information

All Dimensions shown in Millimetres (mm) unless otherwise stated. Dimensions and features are subject to change. Please obtain current technical information prior to order confirmation.

NOTE: We reserve the right to change or revise specifications and product design in connection with any feature of our products. Such changes do not entitle the buyer to corresponding changes, improvements, additions or replacements for equipment previously sold or Shipped.



Australia Head Office

66 Glendenning Road Glendenning, NSW 2761 Australia

ph. +612 8805 0400

w. hussmann.com.au

